

## GRILLE MARKER for HIACE



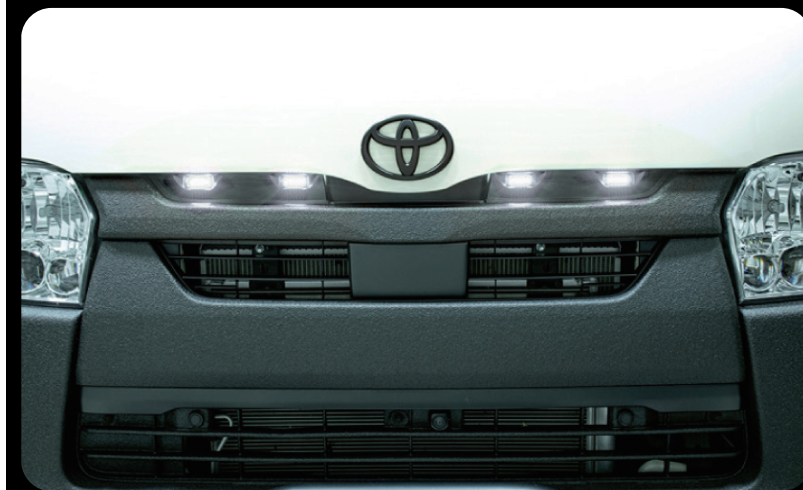
## GRILLE MARKER for HIACE WH

*A perfect fit only possible with dedicated design.  
Achieves an integrated look like genuine parts.  
Smoked Lens / LED White Marker Specification*



**Smoked Lens/White Light Specification**  
LED markers use vehicle inspection compliant units rated at 300 cd or below

No vehicle modifications required.  
Simple installation. Meets vehicle inspection standards.  
Simple installation onto the genuine grille using double-sided tape.  
Harness included.



Item No.	Product name	Applicable vehicle models(Model Type)
<b>EXH-05W</b>	GRILLE MARKER for HIACE WH	TOYOTA HIACE(200 Series, Type 4~) 2013.12~ (For Standard Body)
■Contents: Main Unit (L/R) Each One (With Four Marker Lamps included)-Harnesses-Double-sided tape-Instruction Manual		

### Contact information:

#### IPF TRADING

16-15, wadatanaka-machi,  
takasaki-city gunma pref.,  
Japan 370-0844

Tel: 81-27-327-3551 Fax: 81-27-323-6239



Power Consumption: 12V 1.6W Bezel Body Material: Urethane resin (unpainted)

The product is shipped in its raw material colour (matt black). When painting, surface preparation is required, as with standard aerodynamic parts.

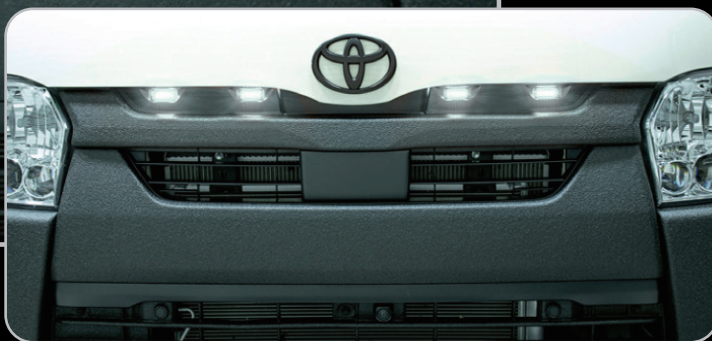




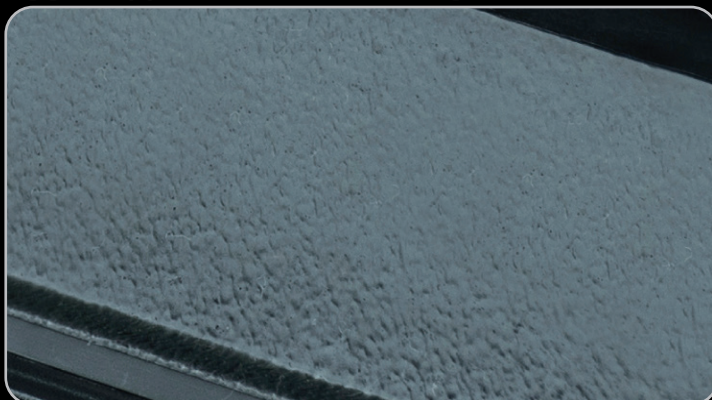
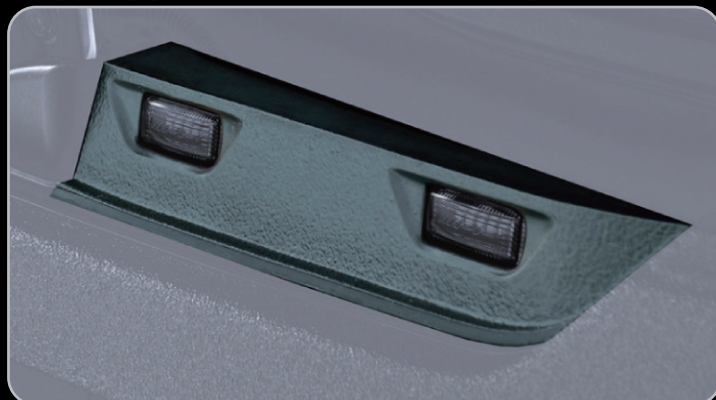
## GRILLE MARKER for HIACE



Smart Installation of IPF Marker Lamps



Chipping paint-effect exterior design creates a rugged appearance with a rough, textured finish



※As it is made of urethane resin, it can be used unpainted; however, it will whiten and deteriorate over time, so we recommend painting it.



IPF-manufactured  
Marker Lamp used  
Complies with "Other Lighting"  
for vehicle inspection  
Comes with a reassuring  
one-year warranty

