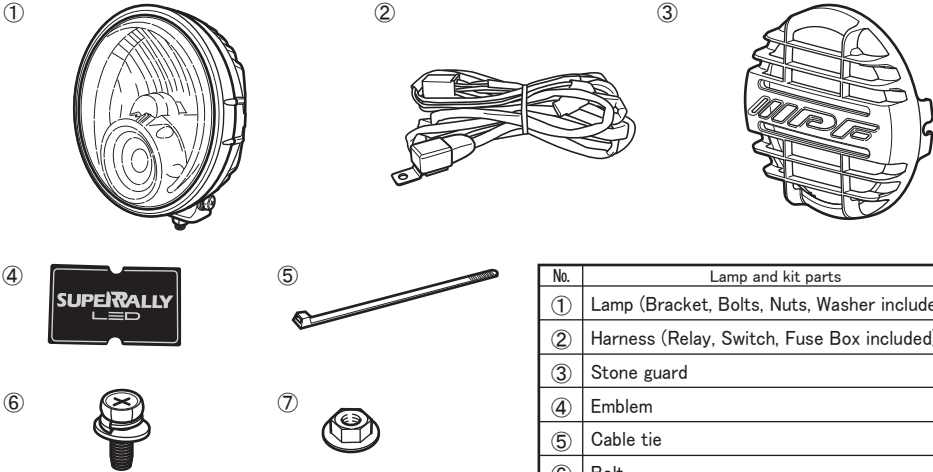


LED Driving Lamp 950SRL Installation Manual

PN : S-950SRL

Component parts



No.	Lamp and kit parts	No. of pcs
①	Lamp (Bracket, Bolts, Nuts, Washer included)	2
②	Harness (Relay, Switch, Fuse Box included)	1
③	Stone guard	2
④	Emblem	2
⑤	Cable tie	6
⑥	Bolt	1
⑦	Nut	1

How to wire



Before the installation work, you must remove the (-) terminal of the battery. If the vehicle mounts 2 batteries, remove both (-) terminals.



Install the relay and harness in a position where it will not make contact with high temperature surface. (Such as engine, radiators, or supercharger, exhaust pipes.)



All the connectors and terminals should be solidly connected.



Do not pull strongly the harness and connectors.



Install the harness and cords in a position where it will not be scratched, bent or pressed such as in moving parts (Pedals / Wires / Doors / Belts / Pulleys). In some cases, it may cause the vehicle to catch fire.

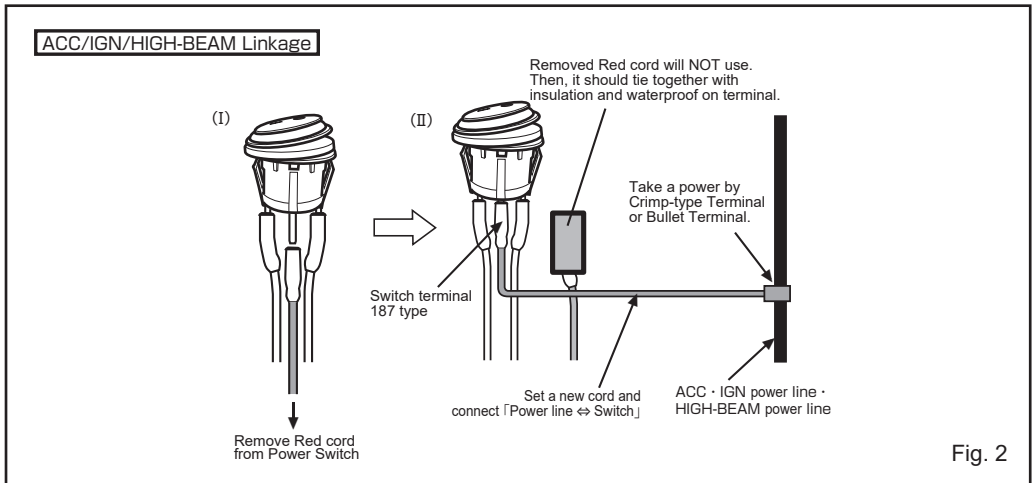
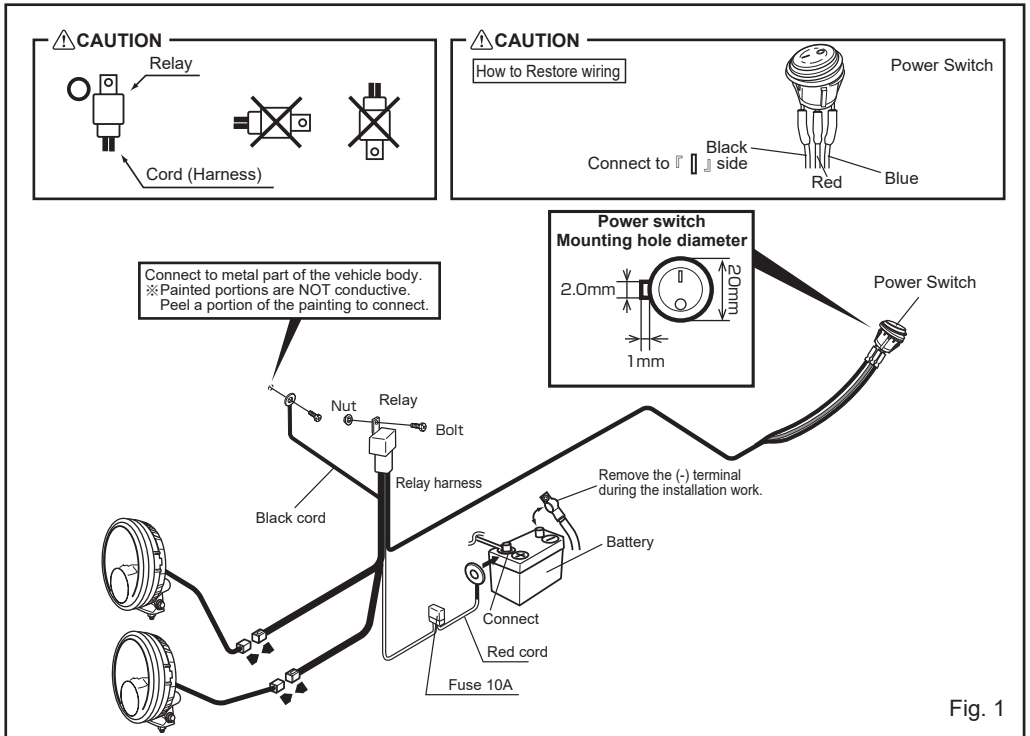


Harness and cords should be securely tied by cable ties or tapes.

1. Wire your lamps. Refer to the Fig.1.
2. If the wiring needs to pass through into vehicle, remove the switch's wiring. Refer to the Fig.1 (How to Restore wiring).
3. For setting an ignition interlock with ACC PWR/IGN PWR or HIGH-BEAM PWR, an additional wiring is required after a normal wiring procedure. Refer to the Fig.2.

⚠ WARNING

Strictly follow the cautionary points mentioned above. Incorrect or faulty wiring may cause the vehicle to catch fire.

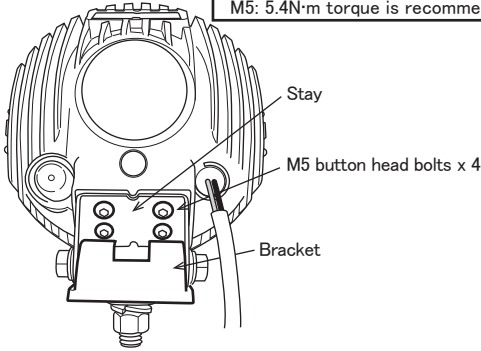


How to install

Secure each bolt, nut and screw tightly.
 Check to fix attached locations regularly.

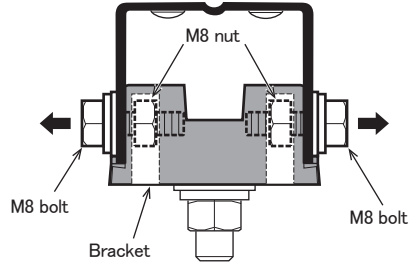
① Remove the bracket and secure M5 button head bolts.

M5: 5.4N·m torque is recommended.



Caution

When removing the bracket and M8 bolts, be careful not to loose M8 nuts by a fall.



② When changing the mounting position, remove the bracket and M5 button head bolts. Attach the stay where you prefer and secure M5 button head bolts.

③ Check both M8 nuts are in the right place of inside the bracket and secure the bracket and M8 bolts.

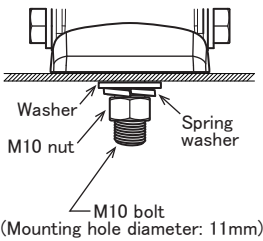
④ Attach the emblem on the opposite side of the stay secured.

⑤ Secure M10 bolt on the vehicle part.

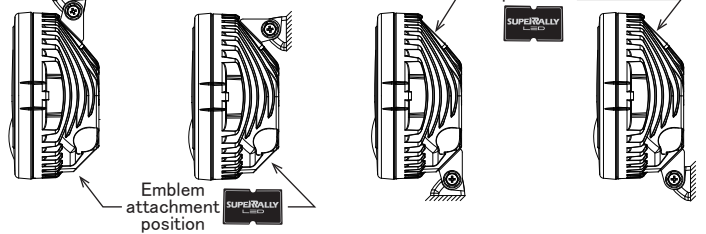
M5: 5.4N·m torque is recommended.

M8: 22N·m torque is recommended.

M10: 44N·m torque is recommended.



Mounting example



Specification

PN	Power consumption		Fuse	Weight (bracket included)
S-950SRL	12V/24V *	22W	10A	1240g **

* This product includes 12v relay. Optional 24v relay (PN: WA-18) is required for 24v vehicles.

** By one lamp.

Optional part

PN	Part name
WA-18	600 series 24v relay (1pcs)

How to change relay

Remove the relay from the connector as shown.

