

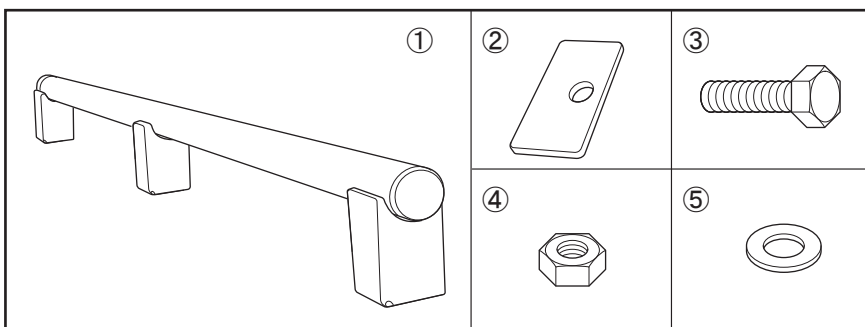


Thank you for purchasing IPF EXP roof rack.  
Please read this manual carefully prior to installation to follow correct fitting procedure.  
Store this manual in safe location for future reference.

## Handling precautions **Caution**

- Strictly follow the installation manual. Incorrect installation causes damage or loss to your vehicle.
- No liability is accepted for accidents or damage to your vehicle or product caused by installation methods other than those described in this manual.
- This product must not be modified in any way.
- It is recommended that this product be installed by a professional.
- Turn off the engine and ignition before installation.
- DO NOT put your weight on the vehicle with your hands. Vehicle body panels, a roof panel in particular, can easily be deformed or damaged by the weight.
- Take care to avoid falling when using a stepladder.
- Make sure to protect your vehicle from corrosion with touch-up paint etc., if the installation of this product caused any damage to your vehicle.
- DO NOT use a rope or belt on the rail. Vibration causes them to move and become loose, and excessive tension can damage the slot channel.

## Component parts



No.	Part name	No. of pcs
①	Rail ASSY	1
②	Spacer plate (for height adjustment)	3
③	Hex bolt	3
④	Nut	3
⑤	Washer	3

## How to install

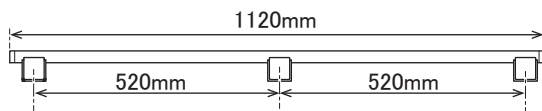
### Rail mounting positions

Adjust mounting positions of the rails according to intended use.

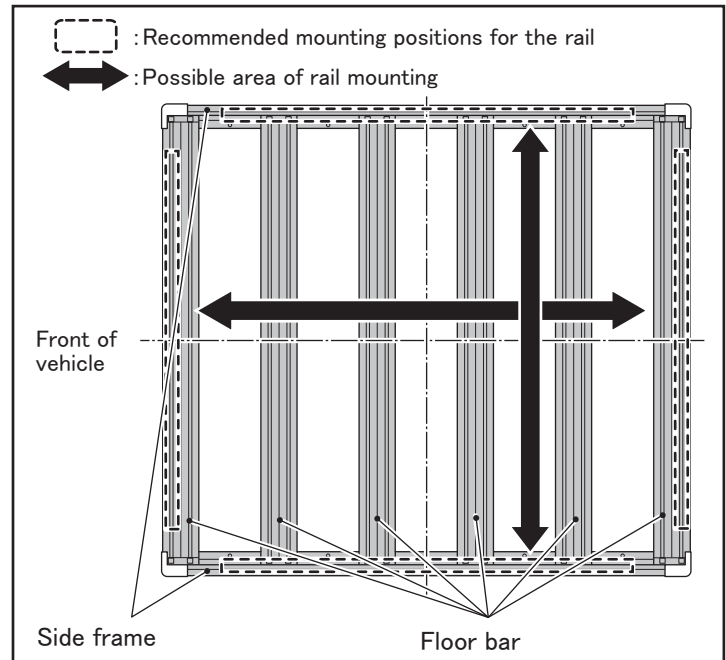
In addition to the recommended mounting positions, it is possible to mount the rails on each floor bar and also in a vertical direction to the bars. Refer to the figure right.

#### Advice

Use the spacer plates to match the different heights of the side frames and floor bars.

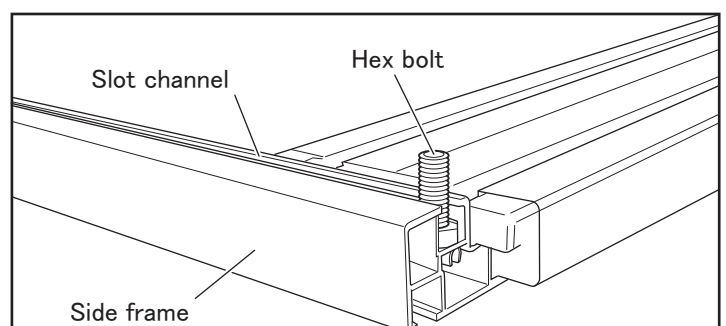


When correctly installed, the bolts and nuts are hidden from view.



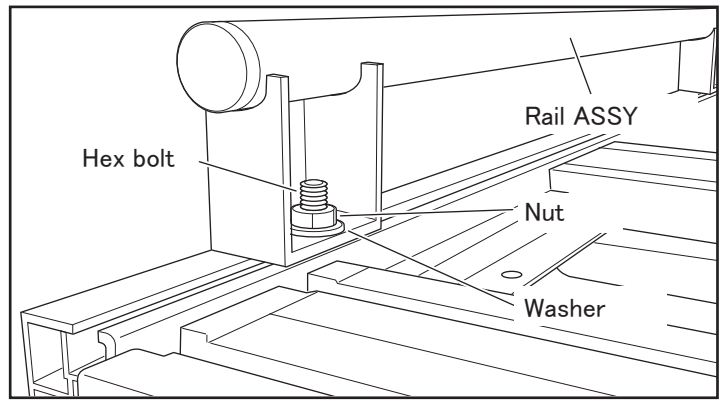
### Fit the rail assembly onto the side frame

1. Remove the corner cap from EXP roof rack and insert the three hex bolts supplied into the slot as shown in the figure right.



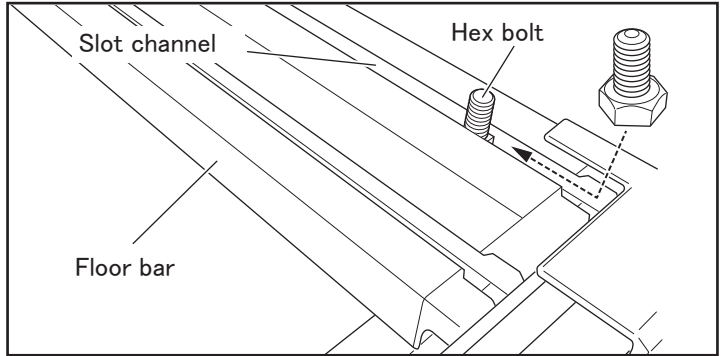
2. Insert the rail assembly into the hex bolts, and set preferred mounting position. Tighten the rail assembly with washers and nuts, and place the corner cap back in place.

Recommended tightening torque for nuts: 10 N·m

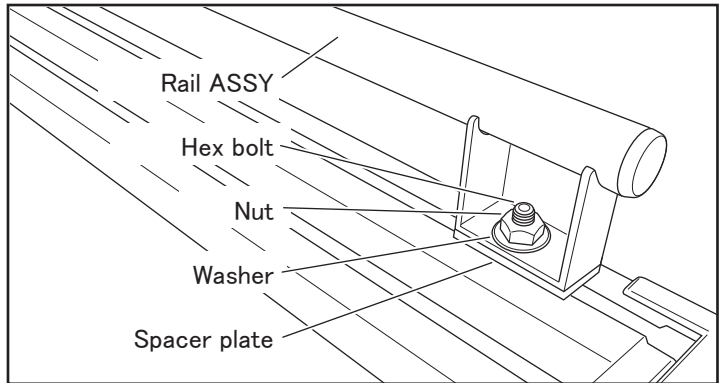


## Fit the rail assembly onto the floor bar

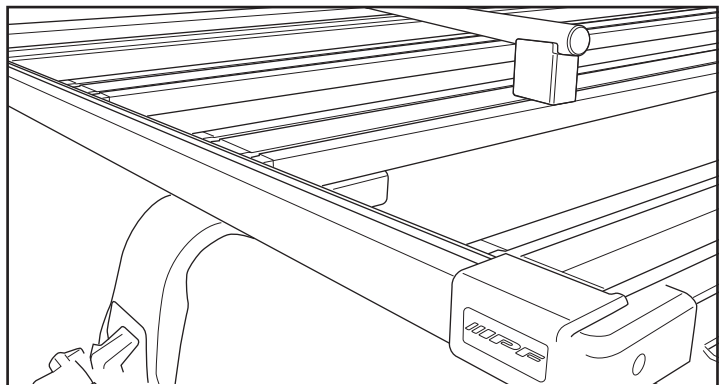
1. Insert the three hex bolts supplied into the slot in the floor bar.



2. Insert the spacer plates and rail assembly into the hex bolts, and set preferred mounting position. Tighten the rail assembly with washers and nuts, and place the corner cap back in place.



- For vertical mounting of the rail to the floor bar, insert the hex bolts into the slot in the floor bar and tighten the rail assembly with washers and nuts.



## Check after installation

1. Check to see if any bolts or nuts are left untightened or loose.
2. Periodically check all bolts and nuts to see if they are loose, and retighten if needed.