



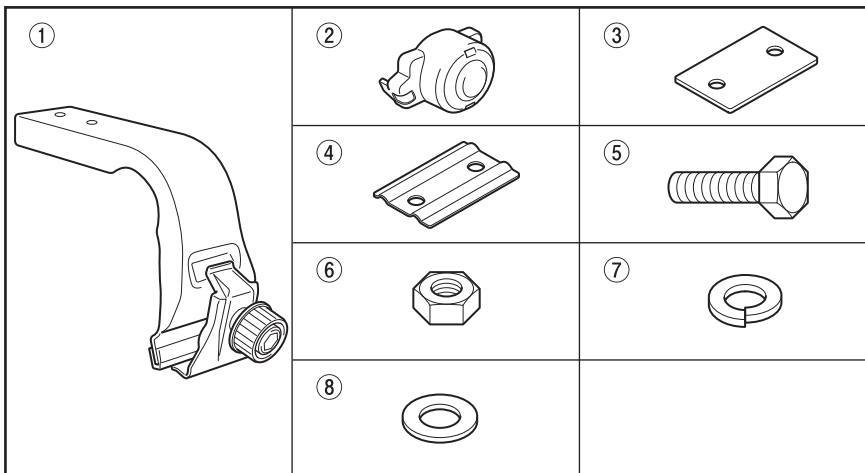
# EXP Roof Rack Leg Kit Installation Manual

Thank you for purchasing IPF EXP roof rack.  
Please read this manual carefully prior to installation to follow correct fitting procedure.  
Store this manual in safe location for future reference.

## Handling precautions **Caution**

- Strictly follow the installation manual. Incorrect installation causes damage or loss to your vehicle.
- No liability is accepted for accidents or damage to your vehicle or product caused by installation methods other than those described in this manual.
- This product must not be modified in any way.
- It is recommended that this product be installed by a professional.
- Turn off the engine and ignition before installation.
- DO NOT put your weight on the vehicle with your hands. Vehicle body panels, a roof panel in particular, can easily be deformed or damaged by the weight.
- Installation must be done by two or more persons unless special machinery (e.g. crane, chain block) is available.  
Take care to avoid falling when using a stepladder.
- Make sure to protect your vehicle from corrosion with touch-up paint etc., if the installation of this product caused any damage to your vehicle.

## Component parts



No.	Part name	No. of pcs
①	Leg	6
②	Knob cover	6
③	Rubber pad	6
④	Spacer plate	6
⑤	Hex bolt	12
⑥	Nut	12
⑦	Spring washer	12
⑧	Washer	12

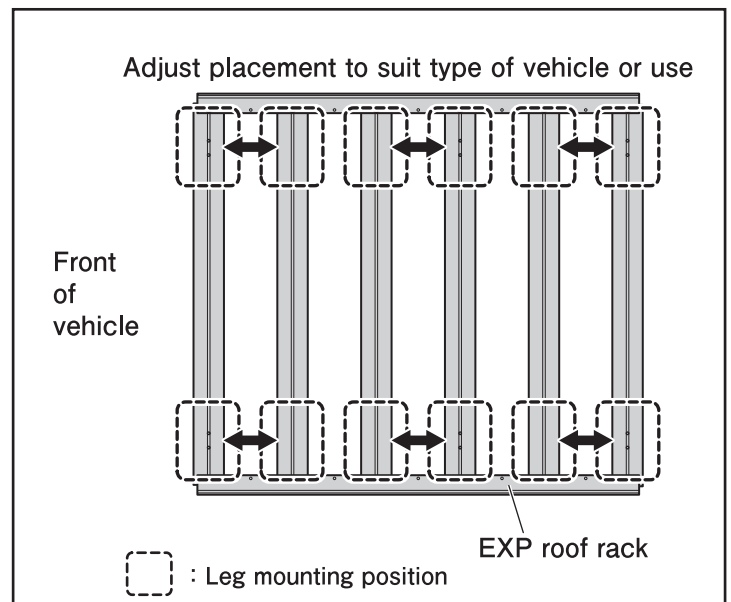
## How to install

### Leg mounting position

Refer to EXP roof rack installation manual and fit hex bolts in the positions shown in the figure right.

#### Advice

Adjust the position of the legs according to type of vehicle or use.



## 1. Fit the legs

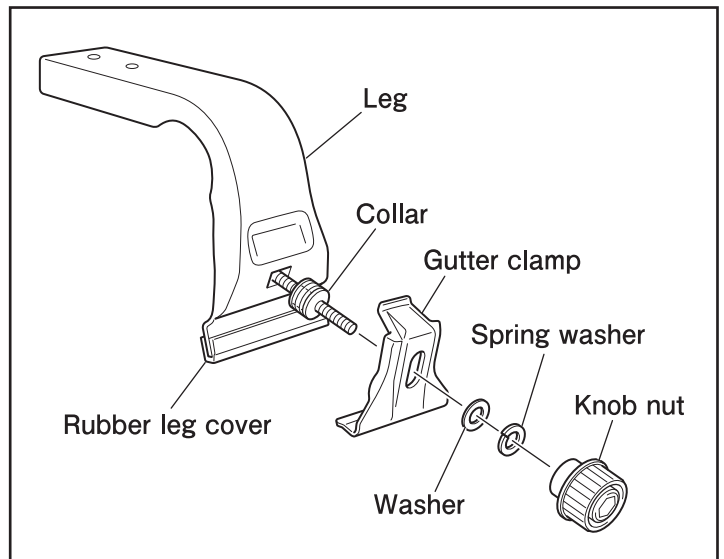
Remove the knob nut, spring washer, flat washer and gutter clamp from the leg.

### Advice

Place the removed parts in a safe place to avoid losing them.

### Advice

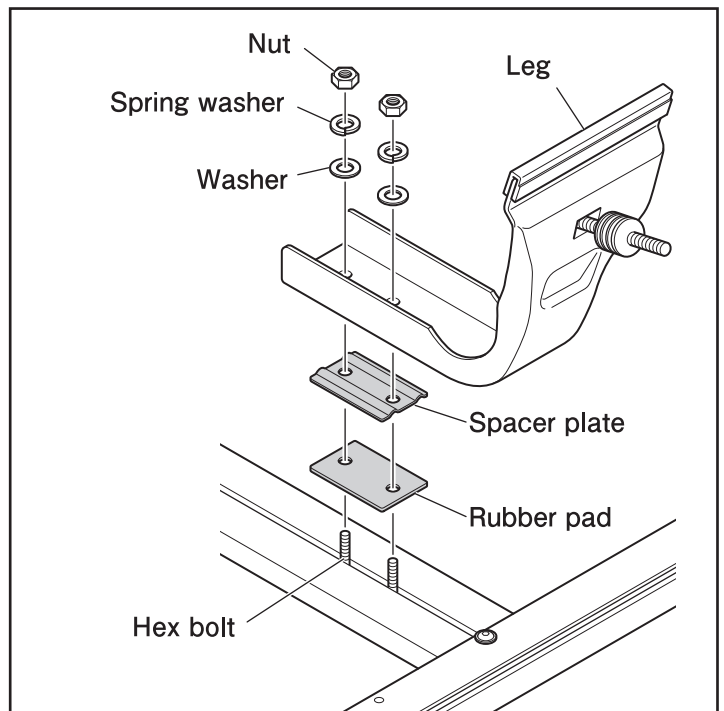
Please note that the rubber leg covers and collars are not intended to be removed, but can easily come off. Refer to the figure for the correct way of fitting if necessary.



Temporarily assemble the frame pad, spacer plate and leg to the hex bolts fitted to EXP roof rack with nuts, spring washers and washers (temporary assemble).

### Advice

DO NOT tighten the bolts until you are instructed to do so. The term "temporary assembly" is used in this manual to describe a condition where fasteners are tightened without using any tools and parts are held in place so that they do not fall out, but can be moved and adjusted slightly.



## 2. Place EXP roof rack temporarily and locate in position

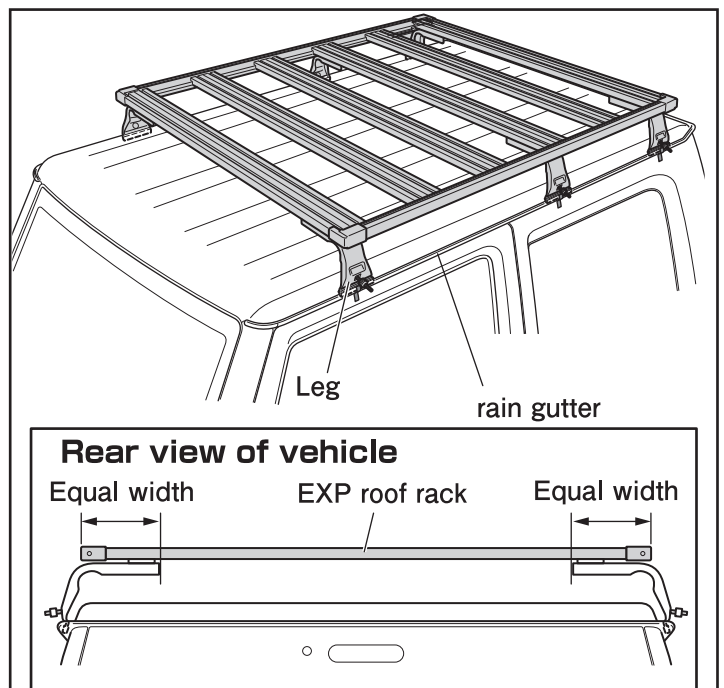
Apply protective tape to the area around the top of vehicle gutter, especially where it may come into contact during installation.

Slide the legs over the rain gutter and place EXP roof rack on top of them temporarily.

Adjust the position of EXP roof rack so that the right and left sides of the rack are in the center of the vehicle and tighten the nuts until the legs do not move.

### Caution

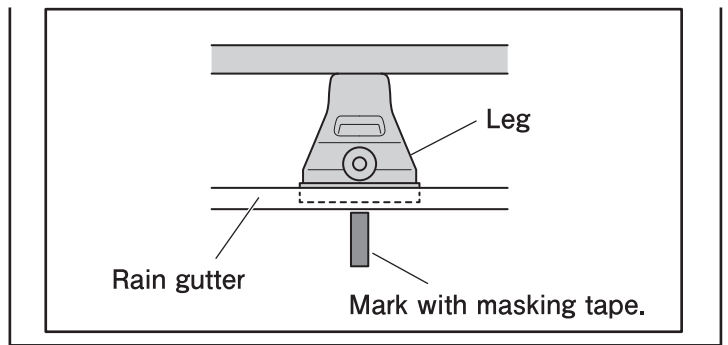
Make sure that the legs do not come into contact with the vehicle body panels, especially the sides of roof panel.



Position the EXP roof rack and mark it on the side of the vehicle with masking tape, aligning it with the center of each leg.

Remove the EXP roof rack from the vehicle and tighten the nuts.

Recommended tightening torque: 4.0 N-m



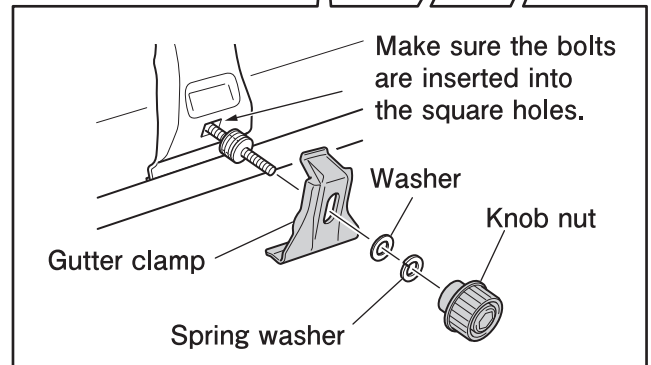
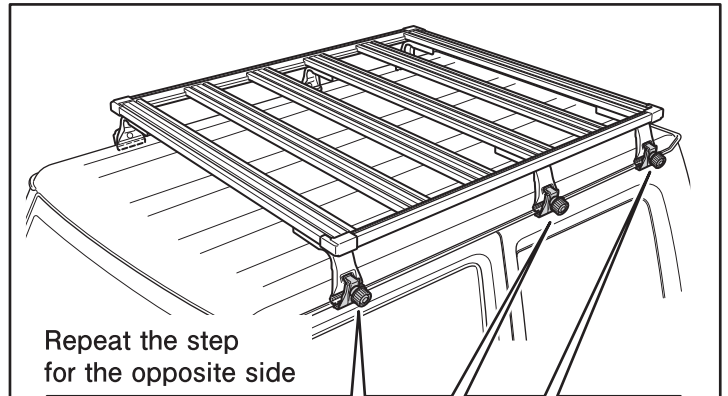
### 3. Install EXP roof rack

Reassemble the knob nut, spring washer, flat washer and gutter clamp.

Secure EXP roof rack by evenly tightening the knob nuts on both sides.

#### Advice

To prevent scratches and possible damage, it is advisable to use commercially available roof rack protecting sheets and apply them where the gutter clamps come into contact with the rain gutter.

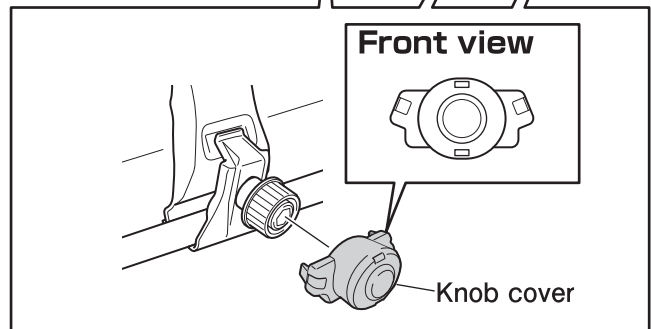
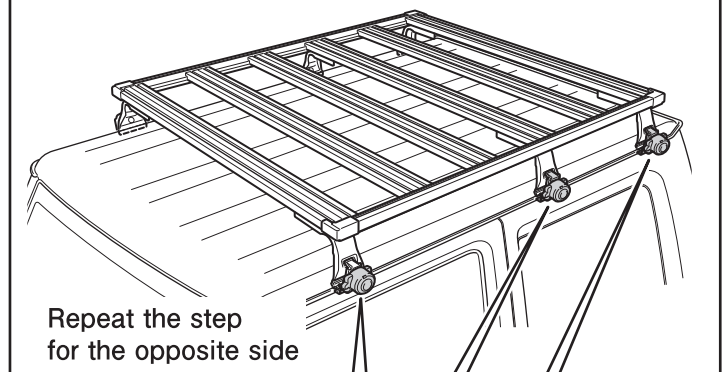


Fit the knob cover to the knob nut.

#### Advice

Knob cover is not symmetrical and should be fitted with care. Refer to the figure below.

Remove the protective tape.



## Check after installation

### **Caution**

Make sure that the legs do not come into contact with the vehicle body panels, the sides of roof panel in particular. Check that the openings of vehicle doors do not come into contact with the gutter clamps on the legs.

### **Caution**

Ensure that the installation is carried out in accordance with the instructions.  
Failure to tighten the bolts may lead to the main unit falling off, resulting in serious accidents.