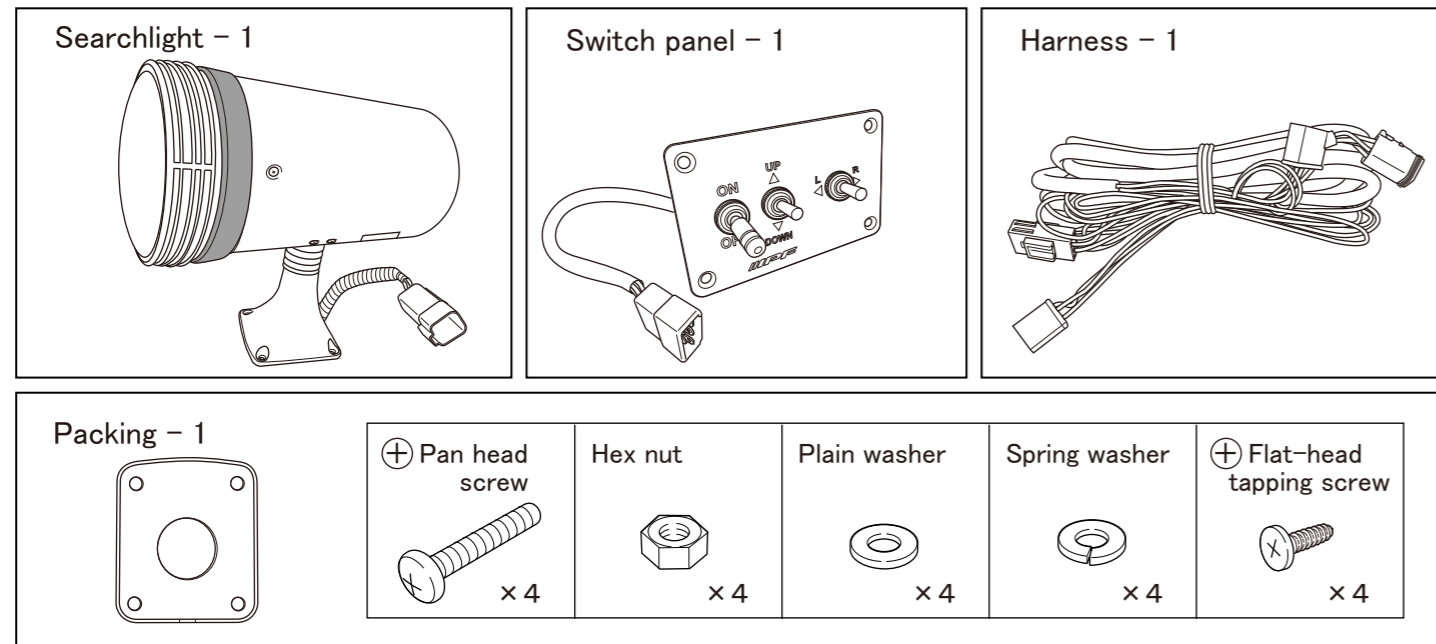


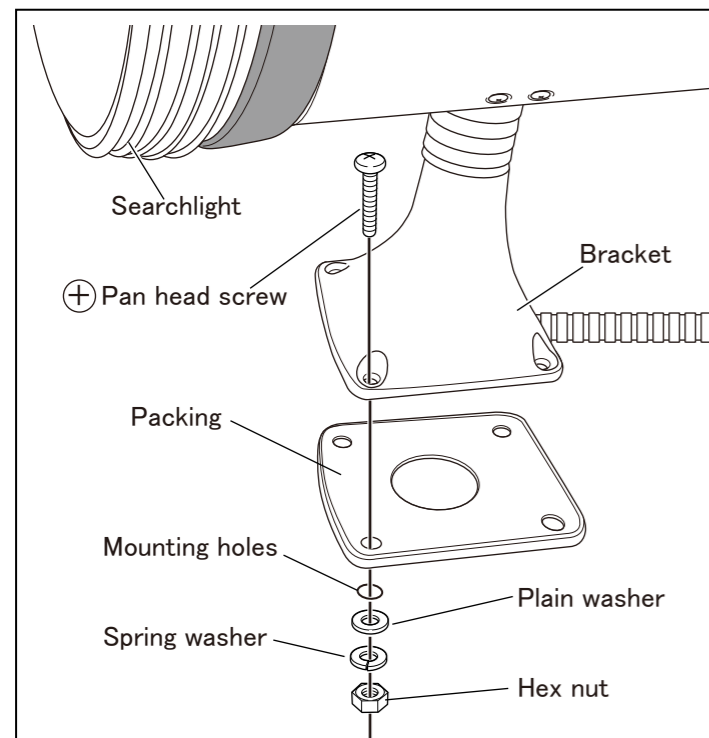
IPF 924 SEARCHLIGHT Installation Manual

PN : 924SL

Component parts



How to install



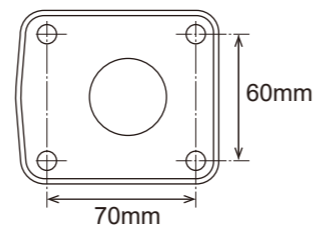
How to install

1. Make 7 mm (to 8 mm) -dia. four mounting holes in where you mount the searchlight (refer to the screw's diameter). When necessary, make 30 mm (to 40 mm) -dia. hole to pass the harness through the mounting surface (refer to the harness's diameter).

2. Set the packing in the right place on the four mounting holes. Refer to the figure left, secure the bracket of the searchlight with ⊕ Pan head screw, Plain washer, Spring washer and Hex nut.

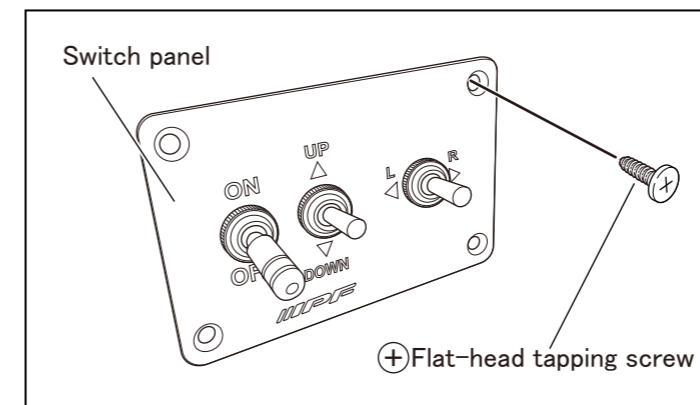
Advice

Rotate the light housing by hand or use miniature screwdriver to allow space for securing the screws.



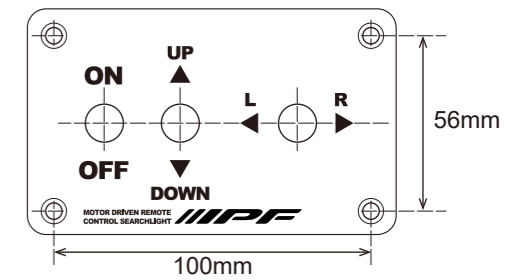
IMPORTANT

- Install the searchlight in the UPRIGHT POSITION to ensure strength for installation stability and water resistance. Inappropriate installation and usage cause damage to the product. Correct installation required in order to prevent ingress of water into the light housing and not to diminish performance of the product.
- Periodically tighten the pan head screws (retightening).

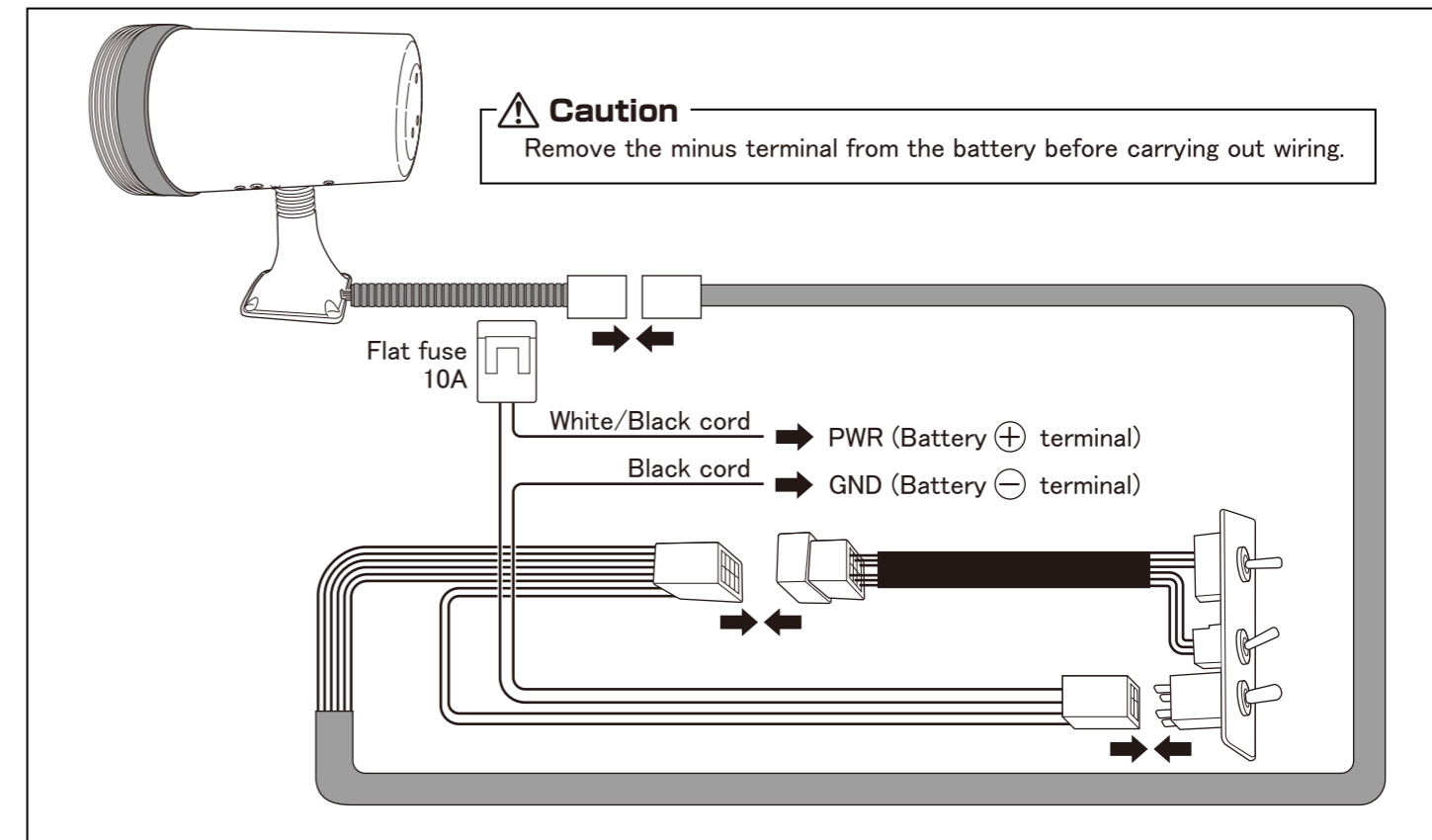


Switch panel installation

1. Attach the switch panel on a desired position with ⊕ Tapping screws.



How to wire



How to replace the lens unit

Refer to the figure below, displace the silicon ring to the opposite direction of the lens unit indicated by the arrow. Remove the two screws both fastened the lens unit to the searchlight and disconnect the two connectors. Replace the lens unit and restore all the parts to its original state.

