



Door Handle Protector Installation Instructions

[Multi A] **EXM-01 BK** / **EXM-02 BR**
Item No. : [Multi B] **EXM-03 BK** / **EXM-04 BR**

Thank you very much for purchasing IPF products.

Please read the notices in this manual carefully and make sure that you use the product correctly.

After you review this manual, please keep it in a safe place and take care not to lose.

Installation Instructions

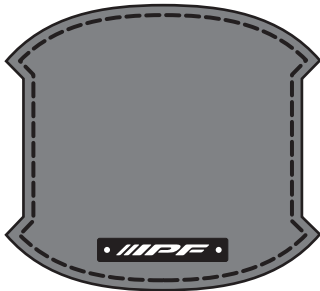
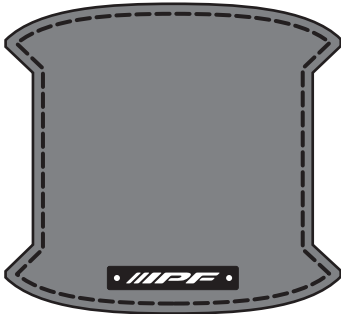
⚠ Caution

- No responsibility is accepted for any problems or accidents caused by incorrect handling, improper installation or misuse of this product.
- If the product is damaged or transformed in accidents or contact, please remove it, otherwise this is dangerous.

⚠ Attention

- Make sure to remove dirt and coatings from the attachment area beforehand.
- Since environmental temperatures and the temperature of the attachment surface below 20 °C reduce bonding strength, please heat the adhesive surface and the attachment surface of the product by using a hairdryer, etc. before attachment.
- After attachment, be careful not to get wet, e.g. by washing the car, within 24 hours. It may cause floating or peeling.
- If any chemical products such as waxes, coatings, etc. or any solvents such as petrol stick to the material, wipe it off immediately. This may cause stains, deformation, etc.

Components

Multi A		EXM-01 BK(BLACK)	Set of Two
		EXM-02 BR(BROWN)	
Multi B		EXM-03 BK(BLACK)	
		EXM-04 BR(BROWN)	

Please check our website for details of compatible car models.

How to Install

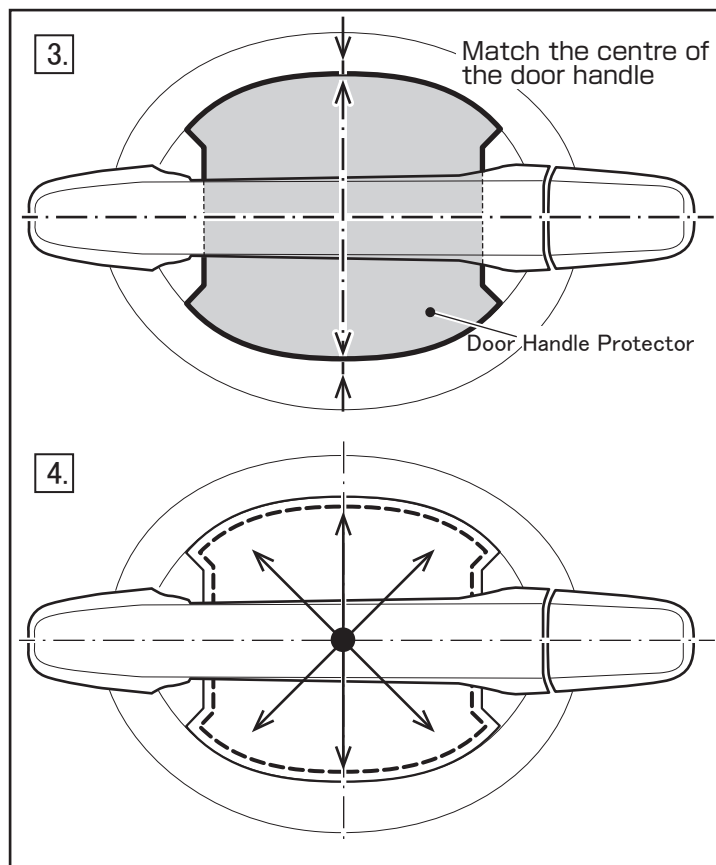
Common Multi A・B

1. Clean the attachment surfaces with dewaxing oil.
If there is a coating or similar covering on the attachment surface, please make sure that it may peel off.
2. Remove the protective film from the product surface.
3. Remove the upper side of the release film from the back of the product, balance the door handle shape with the top, bottom, left and right, and position it.
4. Press the product from the central part of the product to the outside so that it adjusts to the concave shape of the door handle.
5. Peel off the bottom side of the release film and crimp it in the same way as the top side.



Caution

Work carefully to avoid touching the sticky surface.
Also ensure that there is no air biting.
This may cause peeling and floating.



About the after-sales service

If you have any questions about the product, please contact your dealer or us.

Contact details.: **IIPF**

2656 KURAGANO-MACHI, TAKASAKI-CITY, GUNMA, JAPAN 370-1201
TEL. +81-27-346-3316 FAX. +81-27-347-1594
Reception hours.: AM9:00~PM12:00 PM1:00~PM5:00

車両サイズ確認用ゲージです。(必要枚数に応じてコピーしてご使用ください。)

出力用紙サイズ：A4たて

出力設定：実際のサイズで出力

